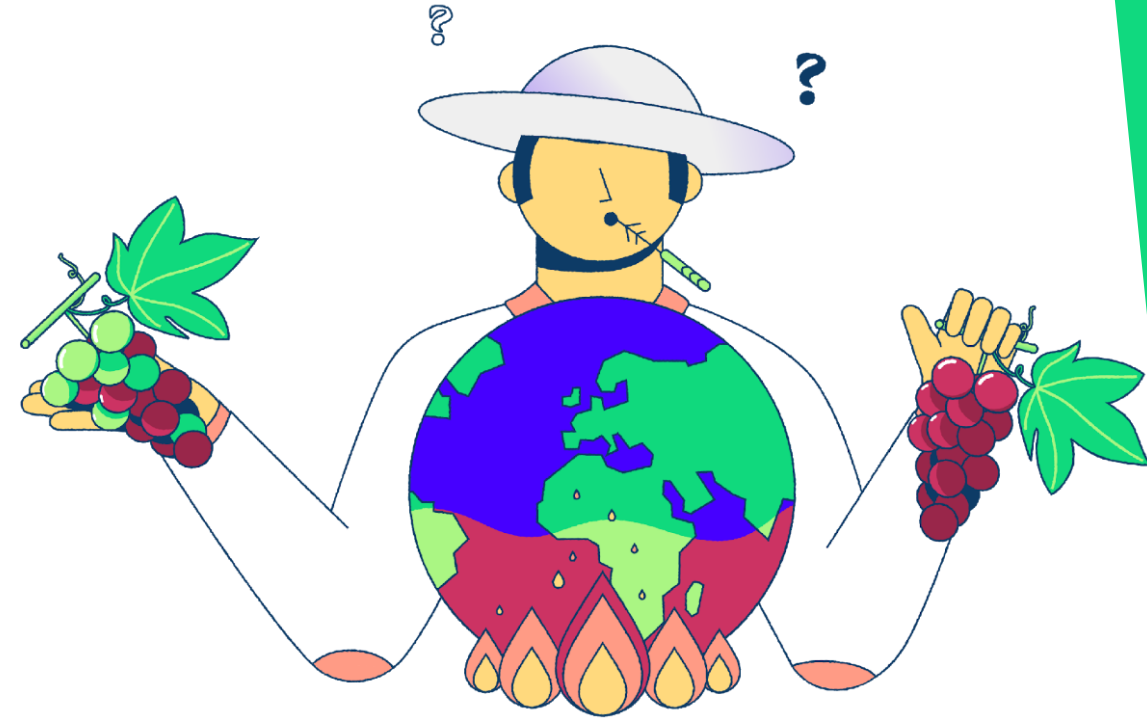




*Great wines come with great Terroir...from Space*

# The problem

## IMPACT OF CLIMATE CHANGE ON VITICULTURE



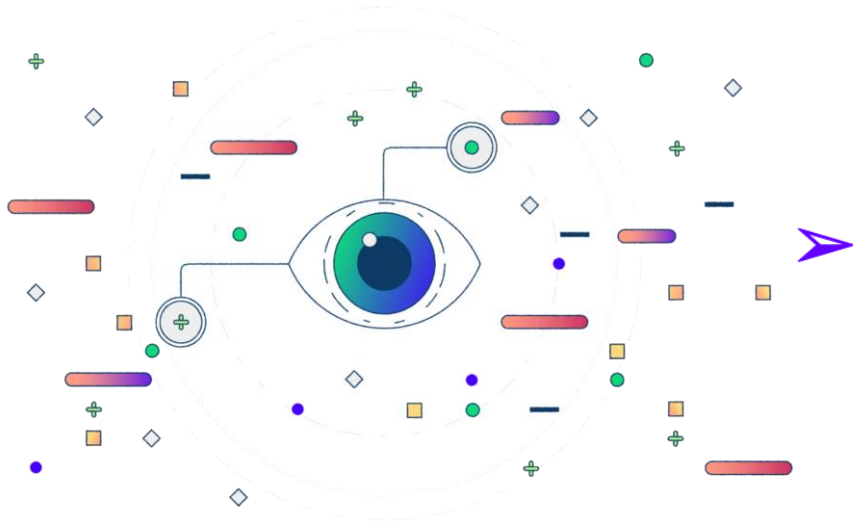
Yields/Quality 

Running costs 

Environmental risks 

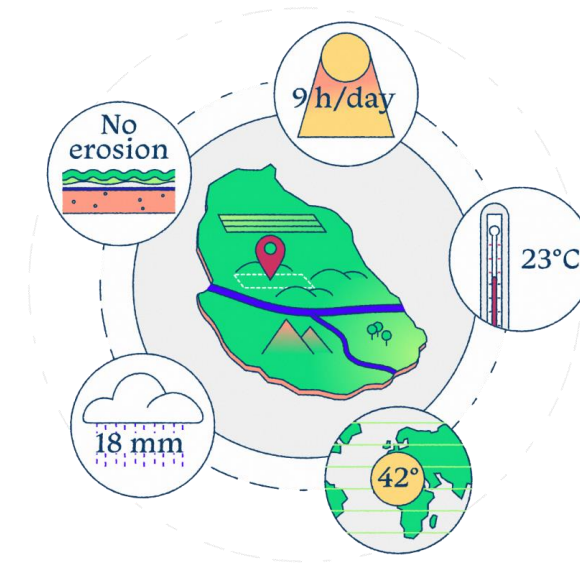
# Our vision

- Adaptation strategy against climate change



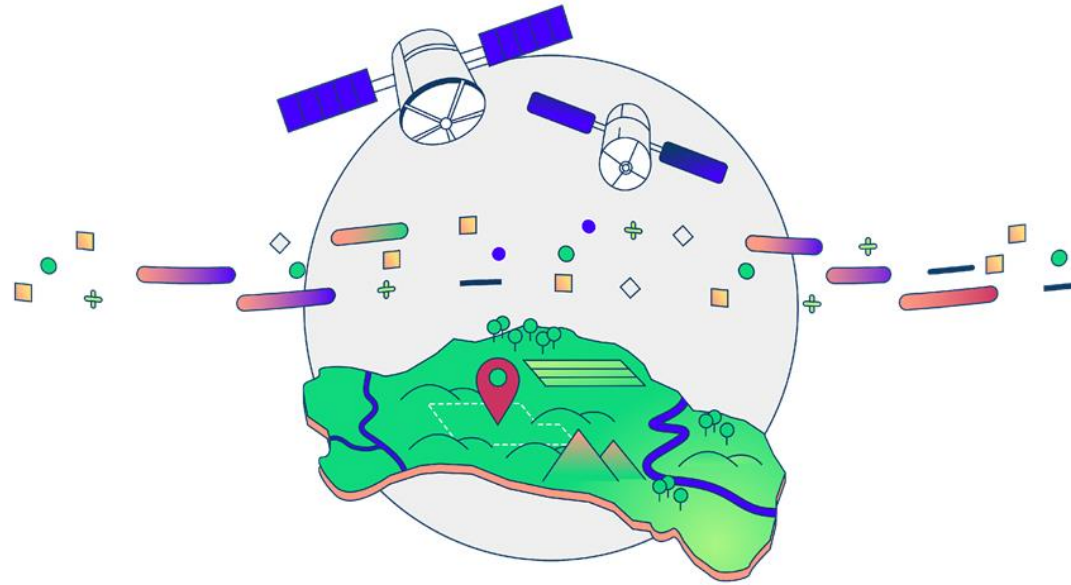
Viticulture planning through data intensive approach

- Safeguard traditional wine regions & support flourishing hubs in non-traditional regions



# Our solution

## EO-BASED SUITABLE SITES IDENTIFICATION

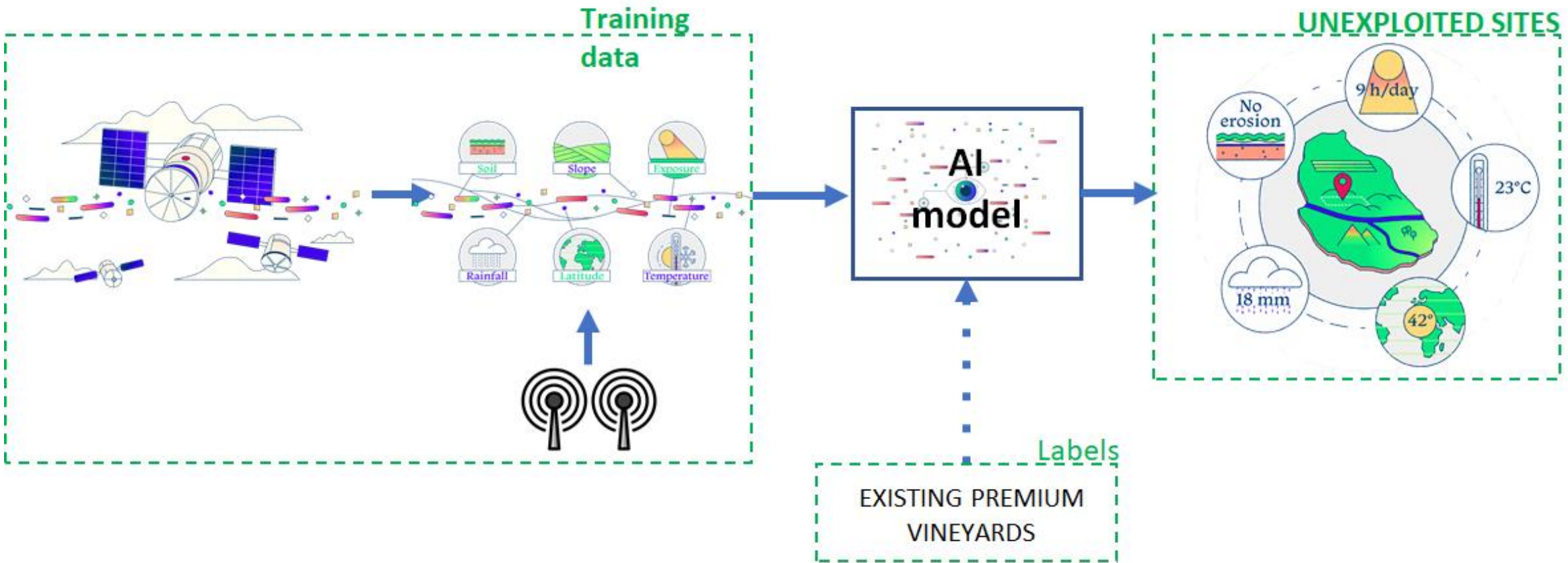


**Lower risk/cost for investment**

**Better quality of production**

**Boost sustainability**

# Technology



# Simulation

## INPUT

- Site data set
- Customer desires



## AI output

Site optimal  
+  
vine variety  
match



# Customer segments

## WINE PRODUCERS



## REAL ESTATE



## INSURANCE PROVIDERS



# Primary customer segment

Primary segment

## WINE PRODUCERS



### *TfS revenue model*

- Report with detected optimal sites + strategic advice
- Vineyard health status monitoring service via subscription
- Renovation of degraded old sites



# Our Team

Founder | CEO

**Alessandro Saetta**

(pursuing MSc. Space Engineering)



Co-Founder | COO

**Manuel Poêjo Torres**

(PhD. Political Science; Strategic Business Development)



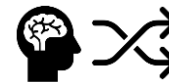
Co-Founder | CSO

**Paul Kimon Weissenberg**

(Cert. Sommelier; MSc. Public Administration)



Mediterranean & Atlantic



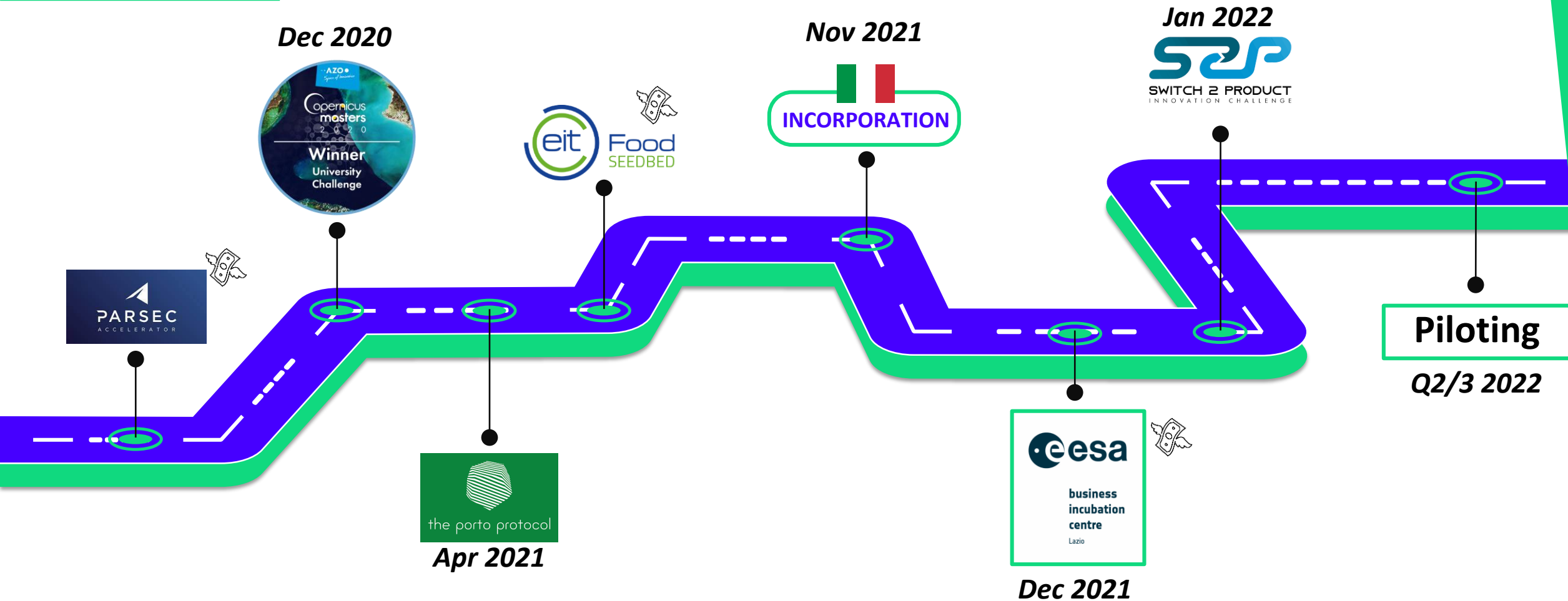
Different backgrounds/skills



Wine Lovers



# Roadmap



**SCALING STRATEGY:** extend the service to other high-valuable crops

# Thank you!

For any question please write to:  
[info@terroirfromspace.com](mailto:info@terroirfromspace.com)

[terroirfromspace.com](http://terroirfromspace.com)

